



BIIS

BANCA INFRASTRUTTURE INNOVAZIONE E SVILUPPO

LAUNCH OF “BANCA INFRASTRUTTURE INNOVAZIONE E SVILUPPO”

- **The first Italian bank in Public Finance and one of the main specialists in Europe**
- **In operation since 1 January 2008, it brings together the expertise of Banca Intesa Infrastrutture e Sviluppo and Banca Opi**

Rome, 23 January 2008 – 1 January 2008 saw the launch on national and international markets of BIIS, Banca Infrastrutture Innovazione e Sviluppo, the bank belonging to the Intesa Sanpaolo Group which has incorporated the group's two banks operating in the Public Finance sector:

- **Banca Intesa Infrastrutture e Sviluppo**, bank belonging to the Intesa Group specialising in Public Finance, created on 1 January 2006 from Banca Intesa's Stato e Infrastrutture Department.
- **Banca Opi**, bank belonging to the Sanpaolo Imi Group specialising in Public Finance, created on 1 July 2000 from the Enti e Infrastrutture Division of Sanpaolo Imi.

Mario Ciaccia, former CEO of Banca Intesa Infrastrutture e Sviluppo, will be the CEO of the new BIIS, which, with Tier 1 capital of 1 billion, total assets of 41 billion and pro-forma operating income of 191 million in the first nine months of 2007, serves more than 2,600 clients with 16 dedicated branches and the support of more than 6,100 branches of the group.

The formation of the new bank is a sign of the clear commitment of the Intesa Sanpaolo Group to play a major contributory role in Italy's development and growth. Hence the creation of the first bank in Italy and one of the main specialists in Europe in the Public Finance sector, wholly dedicated to collaboration between the Public and Private sectors, and focused on promoting the development of infrastructures, growth in local economies, improvement in health provision and public services and the advancement of Universities and research.

In order to pursue this objective, BIIS has been allocated a strategic role within the Intesa Sanpaolo Group: the mission, clients and products, management and operating and commercial structures of BIIS are those of the Public Finance Business Unit, one of the four divisions into which the group is organised.

The key credentials of the BIIS set-up, which support its operational capability, include:

- a client base that embraces all the main public and private entities involved in public expenditure

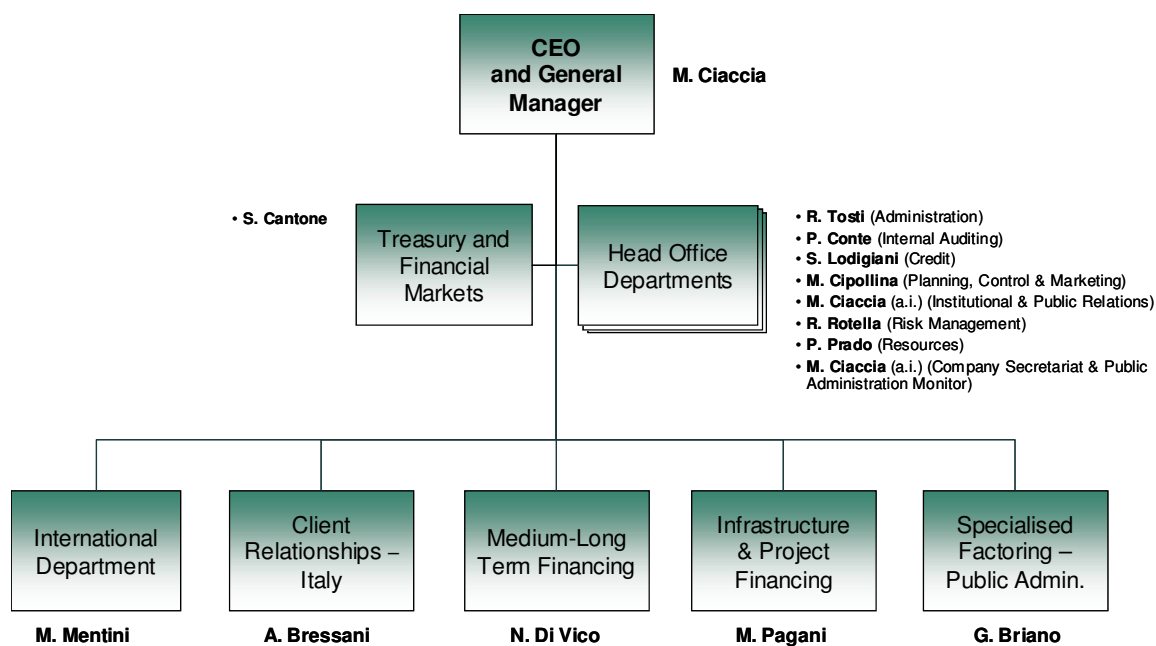
- a 360° service for clients through a comprehensive range of conventional and innovative financial solutions to meet all requirements arising from the interaction between the public and private sectors
- an organisational model with clear responsibilities for client and product, the dedicated coverage of the whole value chain and an extensive presence at local level.

Banca Infrastrutture Innovazione e Sviluppo was created with the precise objective of quickly establishing centres of excellence that Banca Intesa and Sanpaolo Imi had created in the **Public Finance** area in Italy, with a specific offer of products and services ranging from loans to the Debt Capital Market, from the Equity Capital Market to M&A to Project Finance to Leasing for infrastructures. The new bank also offers all the typical Commercial banking services, such as treasury and cash management, receipt of contributions, short term loan advances, commercial payments, deposits and withdrawals.

At the same time BIIS has the expertise and experience that enable it to operate in all the international markets, as proven by the numerous transactions already completed totalling more than 3 billion euro, in major European cities and in European Basin Countries alongside those local authorities most committed to investing in infrastructures.

In addition, the new BIIS internet site (www.biis.it) is available on line as from today, with brand-new graphics and content, where the whole profile of the new bank can be found. The Indian ink drawing of the bridge, which can be seen on the site's home page, characterises the new BIIS graphic concept conceived by Architect Michele De Lucchi. The bridge is inspired by the new bank's values and commitment, and is accompanied by the phrase: "The bridge: charting the course to development, a symbol of dynamism and flexibility, joining together people and places, facilitating interaction, communication and service".

Organisational Structure



BIIS Highlights as at 30 September 2007⁽¹⁾



Ratings

	Moody's	Standard & Poors
Medium- Long Term	Aa3	AA-
Short Term	P-1	A-1+

⁽¹⁾ Clients served at 30.09.2007 by the Public Finance Business Unit; other data relating to the aggregate of Banca Intesa Infrastrutture e Sviluppo and Banca OPI at 30.09.2007, net of FIN.OPI and SINLOC